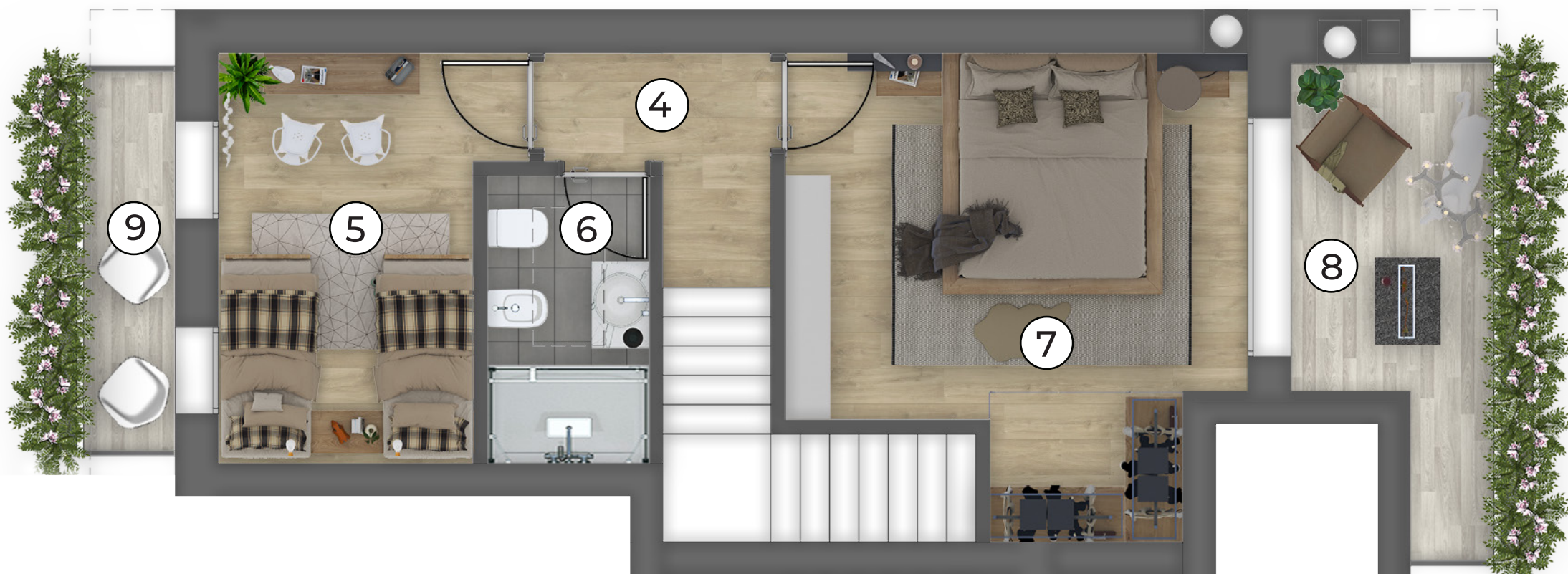
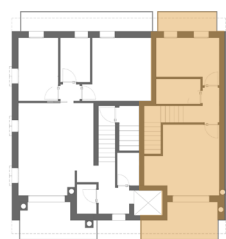
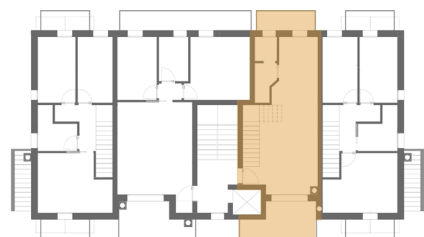


# Chalet Galade - Gallio

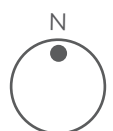
Pianta Piano Primo e Secondo



## Unità 6

91,45 m<sup>2</sup>

1 Soggiorno-cucina	28,60	m <sup>2</sup>
2 Anti-bagno	2,65	m <sup>2</sup>
3 Bagno	1,93	m <sup>2</sup>
4 Dismpegno	3,27	m <sup>2</sup>
5 Camera	9,43	m <sup>2</sup>
6 Bagno	4,00	m <sup>2</sup>
7 Camera	16,31	m <sup>2</sup>
8 Terrazza	8,60	m <sup>2</sup>
9 Terrazza	4,03	m <sup>2</sup>
10 Terrazza	8,60	m <sup>2</sup>
11 Terrazza	4,03	m <sup>2</sup>



Scala 1:75